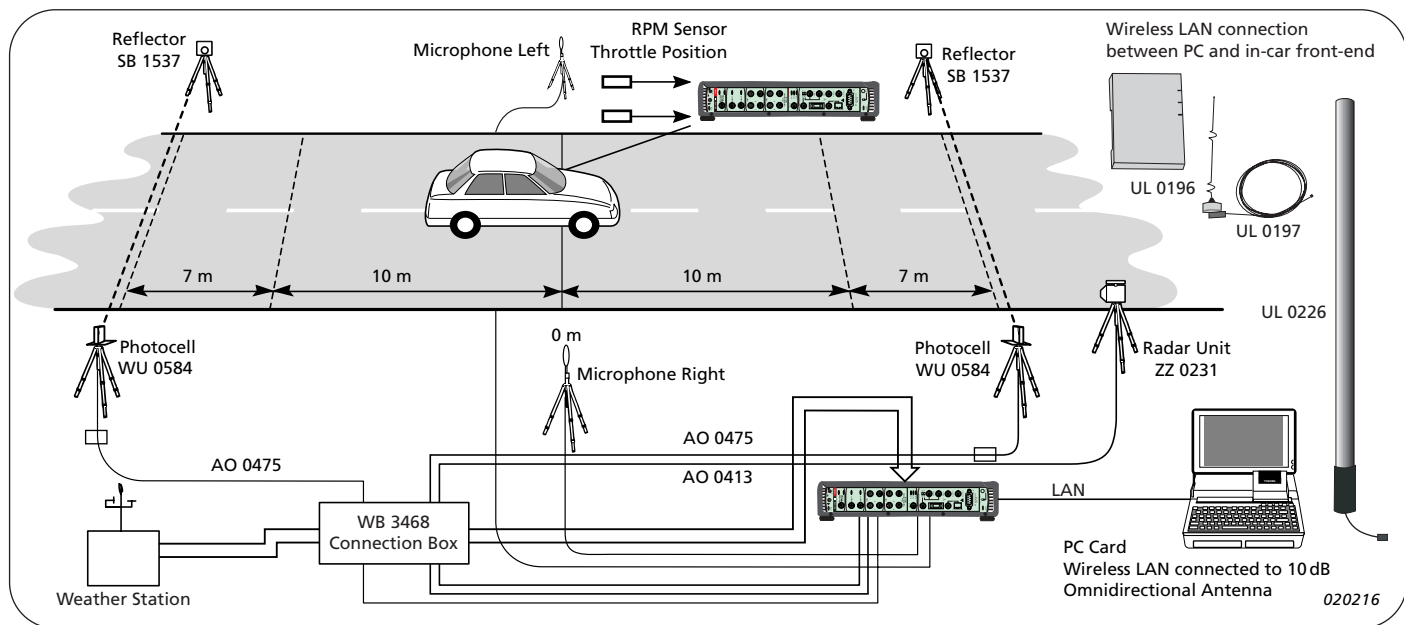
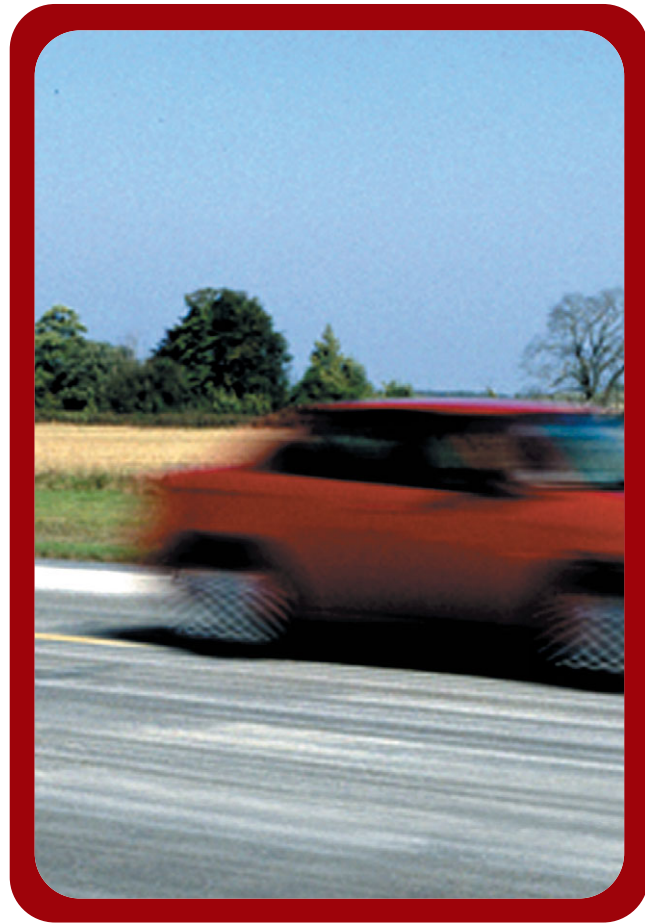


# PASS-BY NOISE TEST SYSTEM

The PULSE Pass-by Noise Test System is a powerful tool for automotive vehicle developers working to meet steadily tightening noise emission standards. It covers all the commonly used international standards for Pass-by, Coast-by, Horn Testing and Exhaust Noise. In addition, it is suitable for user-defined tests having the ability to measure both vehicle exterior and interior noise and vibration simultaneously.

- Scalable from simple 1 channel survey system up to multi-channel with in-car noise/vibration and auxiliary parameters
- One man operation
- Recording of time data for detailed post-analysis
- Built-in database solution for improved data handling
- Optional PDA-based remote control



## PASS-BY KIT WU 0618

- ZZ 0231** Radar Unit for Speed and Position
- AO 0413** Cable for Radar, 60 m
- UA 1522** Tripod for Radar
- 2 x WU 0584** Photocell
- 2 x AO 0475** Cable for Photocell, 40 m
- 2 x SB 1537** Light Reflector

## GENERAL ACCESSORIES

- 4189 L-001** Prepolarized Free-field 1/2-inch Microphone, TEDS
- 2669 L** 1/2-inch Microphone Pre-amplifier, 7-pin LEMO Connector
- EL 4004** Microphone Extension Cable
- UA 0803** Tripods for Microphones and Photocells

## LAN ACCESSORIES

- UL 0196** Access Point
- UL 0199** Client
- UL 0197** Antenna for Car
- UL 0226** 10 dB Omnidirectional Antenna
- UL 0225** PDA Remote Control with Wireless LAN

**TYPE 3560 C-S39**

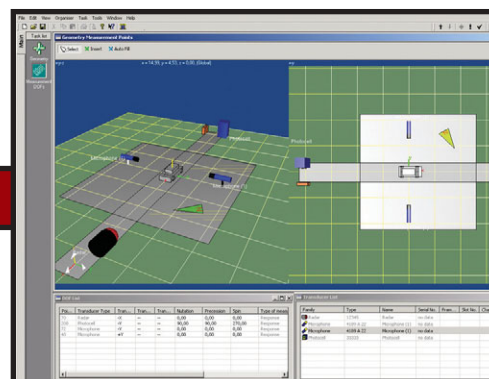
**Pass-by Test Sys. – Survey (1 In)**

3560 C  
7533  
7771 N-001  
7788 A

An entry-level system with maximum level for one microphone. The car needs to pass the microphone in both directions to give a result for both sides. For survey purposes only. Increase number of measurement channels with Input Module Type 3032. Upgrade to Conformance Test System by adding Pass-by Kit WU0618 plus software upgrade to Type 7788 B



*3D site configuration suitable for both dynamic (drive-by) and stationary (Horn and Exhaust) measurements. This is also suitable for sound power type tests*



\* One year SW maintenance

**TYPE 3560 C-S40**

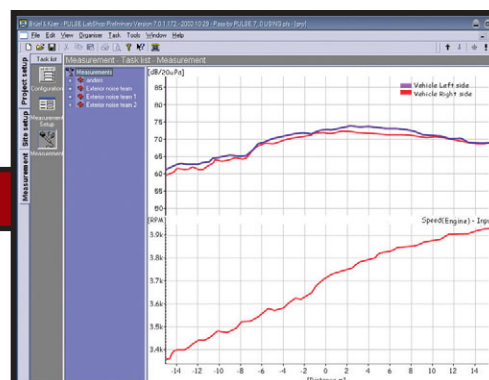
**Pass-by Test Sys. – Conformance (2 In)**

2 x 3560 C  
2 x 7533  
3032 A  
7700 N-006  
7788 B  
7769

This system makes measurements in accordance with ISO 362 and all other common national and international standards. Supports user-defined standards. Uses radar to give the vehicle position and speed, and uses photocells for triggering and absolute position reference. The Front-end in the car gives RPM and Throttle position. The software provides a task-oriented user interface and intuitive test site setup and documentation tools. Upgrade Path – Add one extra 3032 to the front-end in car. Upgrade 7700 6 to 7700 8 and likewise 7788 B to 7788 C. Add 7701

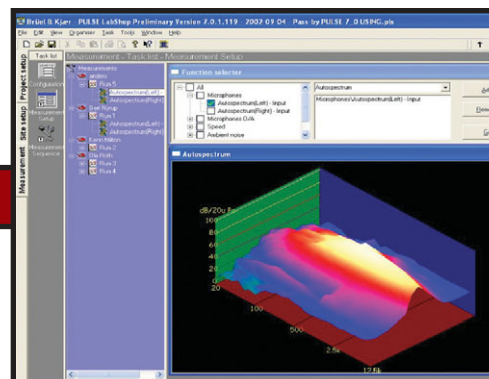


*Typical test results where SPL(A) from both sides of the car is shown together with the speed of the engine*



\* One year SW maintenance

*Measurement results can be shown in many different ways, for example as a colour 3D plot*



**TYPE 3560 C-S41**

**Pass-by Test Sys. – Diagnostics (4 In)**

2 x 3560 C  
2 x 7533  
2 x 3032 A  
7700 N-008  
7788 C  
7701  
7769  
7707

As well as doing the full ISO 362 test, this system makes it possible to make measurements simultaneously inside or on the exterior of the car while performing pass-by measurements, e.g., intensity measurements on the tyres. This gives clearer indications of root causes of problems, so improving the troubleshooting process



*With a front-end in the car, cabin noise and vibration can be monitored simultaneously with the pass-by test*



**SPECIAL PASS-BY ACCESSORIES**

- WQ 1256** Weather Station, Wind Speed / Direction, Temperature, Humidity
- WL 1340** Cable for Weather Station, 40 m
- WQ 2350** RPM Sensor
- MM 0097** Throttle Position Sensor

- WB 3468** Connection Box for Radar Photocells and Weather Station